

Connecting between KTN-70A & MDC-900 / 2000 Series RADAR



KTN-70A



NMEA Cable



MDC-900 Series



MDC-2000 Series

Waypoint:
Connecting MDC-900 Series

Other Ship Track:
Connecting MDC-900 Series



Route of KTN-70A (N Up)

- Move toward 150.5 degree sailing from WPT02 to WPT03.
- Route constitution: Waypoint 00 – 03
- Position, Speed, Course and Other Data output as NMEA.



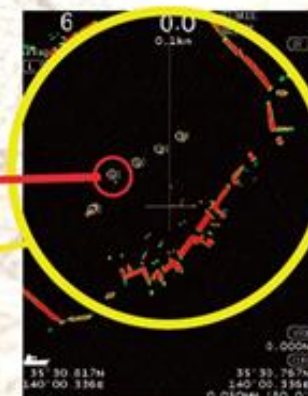
Waypoint of RADAR (H Up)

- Receive Position, Speed, Course and Other Data.
- The flag display into Waypoint position.
- Waypoint flag approaching to centre of display of own position.



Other Ship Track of KTN-70A (N Up)

- ATA Target shown on display with vector.



ATA of RADAR (H Up)

- 6NM of Range
- Acquired target.

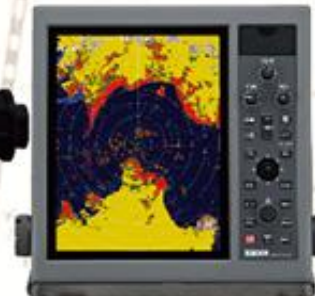
Connecting between KTN-70A & MDC-2200 / 2500 Series RADAR



KTN-70A



NMEA Cable



MDC-2200 Series



MDC-2500 Series

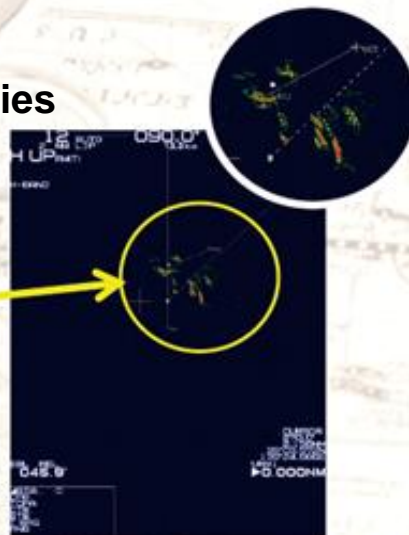
Route:
Connecting MDC-2200 Series

Other Ship Track:
Connecting MDC-2200 Series



Route of KTN-70A (N Up)

- Move toward 90 degree sailing from WPT01 to WPT02.
- Route constitution:
Waypoint 00 – 03
- Position, Speed, Course and Other Data output as NMEA.



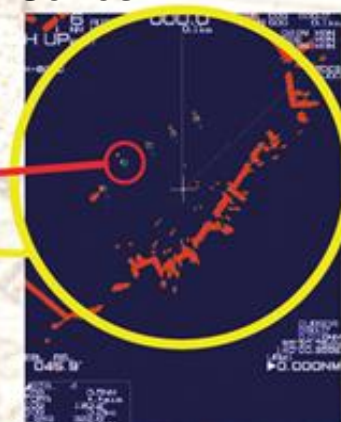
Route of RADAR (H Up)

- The Waypoint 01 - 03, the route by a line.
- Receive Position, Speed, Course and Other Data.
- The flag display into Waypoint position.
- Waypoint flag approaching to centre of display of own position.



Other Ship Track of KTN-70A (N Up)

- ATA Target shown on display with vector.



ATA of RADAR (H Up)

- 6NM of Range
- Acquired target.